

# FROR NPI 300/500 V Cca

CPR Class



DOP Number



MULTISTANDARD  
CABLES

CONTROL  
CABLES

DATA  
CABLES

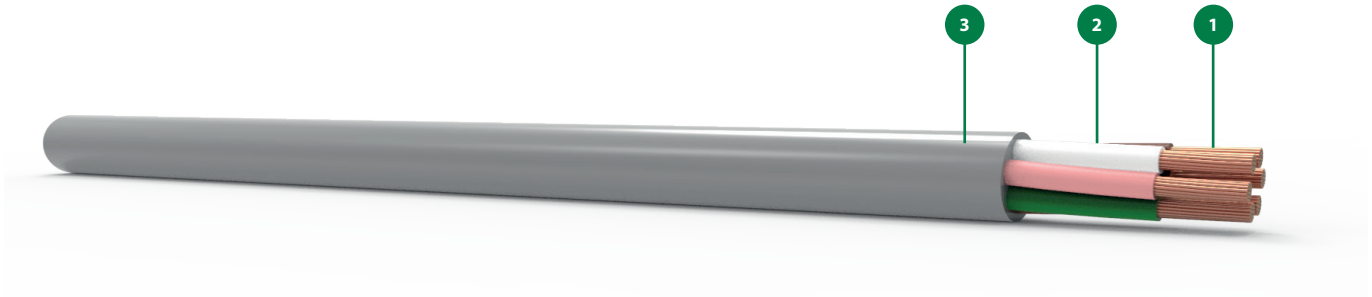
ENERGY  
CABLES

SPECIAL  
CABLES

SHIELDED  
CABLES

ARMOURED  
CABLES

UTILITIES



RITARDANTE LA FIAMMA  
FIRE RETARDANT

## IMPIEGO APPROPRIATO / APPROPRIATE USE

Impiegato la dove sia necessario il collegamento di macchine e impianti civili e industriali.  
Suitable for industrial and civil equipments connection.

	CARATTERISTICHE/ CHARACTERISTICS	DESCRIZIONE/ DESCRIPTION	NORME/ REFERENCE
	Tipo di cavo Type of cable	FROR NPI	
	Tensione nominale Nominal Voltage	U <sub>0</sub> /U 300/500V	
1	Conduttore Core	Rame rosso classe 5 Class 5 red copper	EN 60228
2	Isolamento Insulation	PVC tipo S18 S18 PVC type	EN 50363
3	Guaina Sheath	PVC tipo R18 R18 PVC type	EN 50363
	Campo di temperatura Temperature range	-10°C / +70°C	
	Temperatura massima di corto circuito Maximum short circuit temperature	150°C	
	Tensione di prova Testing voltage	2000 V AC	
	Imballo Package	Matasse mt.100 in termoretraibile - Bobine 100 m thermo-shrinking material coils - Drums	

## NORME RIF. GENERALI / GENERAL REFERENCE

EN 60228, EN 50363, EN 50525-2-51

## IDENTIFICAZIONE CONDUTTORI / CORE IDENTIFICATION

Colorate (DIN 47100)  
Coloured cores (DIN 47100)

# FROR NPI 300/500 V Cca

Construction	Approximate external diameter	Approximate cable weight
n x mm <sup>2</sup>	mm	kg/km
4 x 0.50	5.3	47
5 x 0.50	5.8	58
6 x 0.50	6.4	69
7 x 0.50	6.8	75
8 x 0.50	7.1	86
10 x 0.50	8.5	119
12 x 0.50	8.7	125
14 x 0.50	9.0	142
16 x 0.50	9.5	160

MULTISTANDARD  
CABLES

CONTROL  
CABLES

DATA  
CABLES

ENERGY  
CABLES

SPECIAL  
CABLES

SHIELDED  
CABLES

ARMOURED  
CABLES

UTILITIES