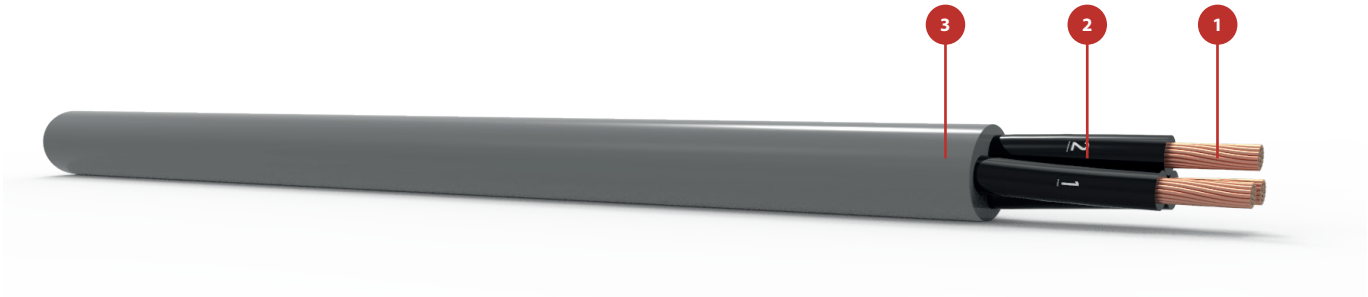


# HSLH JZ/OZ 300/500V Dca

CPR Class



DOP Number



PRIVO DI ALOGENI  
HALOGEN FREE

## IMPIEGO APPROPRIATO / APPROPRIATE USE

Impiegato per il trasporto di segnali in luoghi pubblici, aeroporti e stazioni ferroviarie. Senza alogeni e a bassa emissione di fumi.  
Suitable for transmission of signals in public places, airports and railway stations. Halogen free cable with low smoke emission.

	CARATTERISTICHE/ CHARACTERISTICS	DESCRIZIONE/ DESCRIPTION	NORME/ REFERENCE
	Tipo di cavo Type of cable	HSLH JZ/OZ	
	Tensione nominale Nominal Voltage	Uo/U 300/500 V	
1	Conduttore Core	Flessibile di rame rosso ricotto classe 5 Class 5 flexible annealed red copper	EN 60228
2	Isolamento Insulation	Termoplastica LS0H T16 Thermoplastic LS0H T16	EN 50363
3	Guaina Sheath	Termoplastica LS0H TM7, colore grigio RAL 7001 Thermoplastic LS0H TM7, grey colour RAL 7001	EN 50363
	Campo di temperatura Temperature range	Posa fissa: da -40°C a +80°C, posa mobile: da -30°C a +70°C Fixed laying: from -40°C to +80°C, mobile laying: from -30°C to +70°C	
	Temperatura massima di corto circuito Maximum short circuit temperature	150°C	
	Tensione di prova Testing voltage	4000V AC	
	Raggio minimo di curvatura Minimum banding radius	Posa fissa: 4 x diametro esterno - Posa mobile: 10 x diametro esterno Fixed laying: 4 x external diameter - Mobile laying: 10 x external diameter	
	Imballo Package	Matasse mt.100 in termoretraibile - Bobine 100 m thermo-shrinking material coils - Drums	

## NORME RIF. GENERALI / GENERAL REFERENCE

EN 50525-2-1, EN 50525-3-11, EN 50575:2014 + EN 50575/A1:2016

## IDENTIFICAZIONE CONDUTTORI / CORE IDENTIFICATION

Nere numerate bianche (EN 50334). JZ: con Giallo/Verde; OZ: senza Giallo/Verde  
Black cores numbered in white (EN 50334). JZ: with Yellow/Green; OZ: no Yellow/Green

MULTISTANDARD  
CABLES

CONTROL  
CABLES

DATA  
CABLES

ENERGY  
CABLES

SPECIAL  
CABLES

SHIELDED  
CABLES

ARMOURED  
CABLES

UTILITIES

# HSLH JZ/OZ 300/500V Dca

MULTISTANDARD  
CABLES

CONTROL  
CABLES

DATA  
CABLES

ENERGY  
CABLES

SPECIAL  
CABLES

SHIELDED  
CABLES

ARMOURED  
CABLES

UTILITIES

CROSS-SECTION 0.50 smm			
Construction	Approximate external diameter	Approximate cable weight	Copper weight
n x mm <sup>2</sup>	mm	kg/km	kg/km
2 x 0.50	4.8	43	9.6
3 x 0.50	5.1	50	14.4
4 x 0.50	5.7	60	19.0
5 x 0.50	6.2	71	24.0
7 x 0.50	7.4	84	33.6
12 x 0.50	9.1	142	58.0
18 x 0.50	10.7	204	86.0
25 x 0.50	12.7	283	120.0

CROSS-SECTION 0.75 smm			
Construction	Approximate external diameter	Approximate cable weight	Copper weight
n x mm <sup>2</sup>	mm	kg/km	kg/km
2 x 0.75	5.2	47	14.4
3 x 0.75	5.5	56	21.6
4 x 0.75	6.2	69	29.0
5 x 0.75	6.8	83	36.0
7 x 0.75	8.1	114	50.0
12 x 0.75	9.9	183	86.0
18 x 0.75	11.9	266	130.0
25 x 0.75	14.1	374	180.0

CROSS-SECTION 1 smm			
Construction	Approximate external diameter	Approximate cable weight	Copper weight
n x mm <sup>2</sup>	mm	kg/km	kg/km
2 x 1	5.5	63	19.2
3 x 1	6.0	74	29.0
4 x 1	6.6	90	38.4
5 x 1	7.2	109	48.0
7 x 1	8.6	151	67.0
12 x 1	10.7	243	115.0
18 x 1	12.7	361	173.0
25 x 1	15.2	496	240.0

CROSS-SECTION 1.5 smm			
Construction	Approximate external diameter	Approximate cable weight	Copper weight
n x mm <sup>2</sup>	mm	kg/km	kg/km
2 x 1.5	6.3	70	29.0
3 x 1.5	6.7	94	43.0
4 x 1.5	7.3	112	58.0
5 x 1.5	8.2	141	72.0
7 x 1.5	9.8	191	101.0
10 x 1.5	11.7	282	144.0
12 x 1.5	12.1	311	173.0
18 x 1.5	14.5	450	259.0
25 x 1.5	17.8	630	360.0

CROSS-SECTION 2.5 smm			
Construction	Approximate external diameter	Approximate cable weight	Copper weight
n x mm <sup>2</sup>	mm	kg/km	kg/km
2 x 2.5	7.6	118	48.0
3 x 2.5	8.3	151	72.0
4 x 2.5	9.1	181	96.0
5 x 2.5	10.2	224	120.0
7 x 2.5	12.1	316	168.0
12 x 2.5	15.2	499	288.0
18 x 2.5	18.1	769	432.0
25 x 2.5	22.2	1047	600.0

CROSS-SECTION 4 smm			
Construction	Approximate external diameter	Approximate cable weight	Copper weight
n x mm <sup>2</sup>	mm	kg/km	kg/km
3 x 4	9.9	247	115.0
4 x 4	11.0	299	154.0
5 x 4	12.1	369	192.0
7 x 4	13.3	463	269.0

# HSLH JZ/OZ 300/500V Dca

CROSS-SECTION 6 smm			
Construction	Approximate external diameter	Approximate cable weight	Copper weight
n x mm <sup>2</sup>	mm	kg/km	kg/km
3 x 6	11.7	360	173.0
4 x 6	13.0	429	230.0
5 x 6	14.5	529	288.0
7 x 6	16.0	631	403.0

CROSS-SECTION 10 smm			
Construction	Approximate external diameter	Approximate cable weight	Copper weight
n x mm <sup>2</sup>	mm	kg/km	kg/km
4 x 10	16.8	708	384.0
5 x 10	18.7	862	480.0

CROSS-SECTION 16 smm			
Construction	Approximate external diameter	Approximate cable weight	Copper weight
n x mm <sup>2</sup>	mm	kg/km	kg/km
4 x 16	19.7	1060	614.0
5 x 16	21.9	1270	768.0

CROSS-SECTION 25 smm			
Construction	Approximate external diameter	Approximate cable weight	Copper weight
n x mm <sup>2</sup>	mm	kg/km	kg/km
4 x 25	25.2	1594	960.0
5 x 25	27.9	2014	1200.0

CROSS-SECTION 35 smm			
Construction	Approximate external diameter	Approximate cable weight	Copper weight
n x mm <sup>2</sup>	mm	kg/km	kg/km
4 x 35	28.0	2200	1344.0

MULTISTANDARD CABLES

CONTROL CABLES

DATA CABLES

ENERGY CABLES

SPECIAL CABLES

SHIELDED CABLES

ARMoured CABLES

UTILITIES